

Property Investment Consortium

Vale da Pinta – New Property

Two and three-bedroom Linked Villas



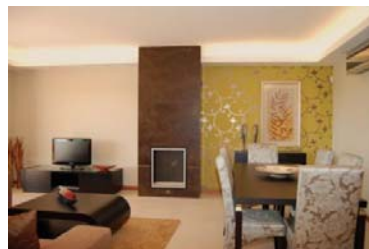
Highlights

- ✓ 2 or 3 bedrooms
- ✓ 3 bathrooms
- ✓ Living areas from 176,60 to 195,80 m²
- ✓ Bosch high tech fully fitted kitchen
- ✓ Remote control gas fireplace
- ✓ Large private patios
- ✓ Golf and countryside views
- ✓ Lush green communal gardens
- ✓ Communal salt water infinity pool
- ✓ High standard of finishings
- ✓ Surround music system
- ✓ Central vacuum system
- ✓ Air-conditioning throughout
- ✓ Solar heating system

This development of twenty linked villas is set in small groups, taking full advantage of the location. All properties are south facing and have beautiful views towards the Vale da Pinta clubhouse and the unspoilt countryside beyond.

These villas are comprised of two or three bedrooms, three tastefully tiled modern bathrooms, a large lounge with fireplace and completed with luxury interior fittings, including fully fitted kitchen with all the latest high tech appliances from Bosch. The property boasts large private patios and lush green communal gardens, shaded with palm, carob, fig and olive trees. Owners will have the exclusive use of a substantial eco-friendly salt water infinity swimming pool.

Owners and their guests can make use of the wealth of facilities available in one of the most sought after areas of the Algarve.



Ref. 300L

From € 506.000

e-mail: sales@propertyinvestmentconsortium.com

www.propertyinvestmentconsortium.com