

# Property Investment Consortium

## Vale da Pinta – New Property

### *Plots for detached villas at your own design*



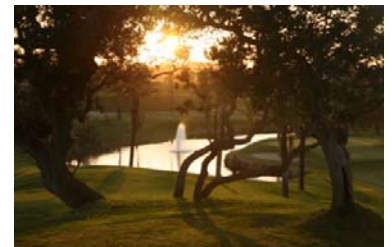
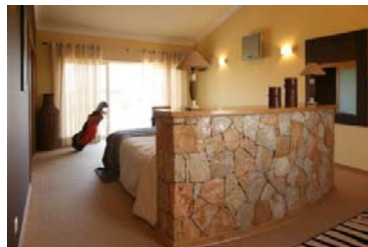
#### *Highlights*

- ✓ Outstanding fairway and country views
- ✓ Good sunny aspects
- ✓ Plot sizes from 1.275 m<sup>2</sup>
- ✓ Design your own bespoke villa
- ✓ Garden landscape and plants
- ✓ Swimming pool
- ✓ Patio areas
- ✓ Pre-installation of sound surround system
- ✓ Solar heating system
- ✓ Central vacuum
- ✓ Air conditioning installed, central heating pre-installed or vice versa
- ✓ Golf Club membership

The final phase of the development of properties on the Vale da Pinta course has now been released offering you the opportunity to purchase one of the last remaining plots where we will build your perfect holiday home, designed to your specification and fitted out to your desire.

The available plots open onto the fairway of Vale da Pinta championship golf course and have stunning views not only over the golf course but also the panoramic Monchique Mountains.

With the help of our in house team of architects, engineers and designers you can rest assured of getting the villa of your dreams. After the property is constructed our landscape designer will take you to the Pestana plant nursery to choose your plants and trees as well as help develop your garden plan so that you can maximise your time outdoors.



Ref. Plots

Plot with villa available from € 650.000

e-mail: [sales@propertyinvestmentconsortium.com](mailto:sales@propertyinvestmentconsortium.com)

[www.propertyinvestmentconsortium.com](http://www.propertyinvestmentconsortium.com)